



Newsletter: 11th December 2023





# OPEN DAY

## 13/12/23

PLEASE JOIN US AT A TIME THAT WORKS BEST FOR YOU

10-11AM, 1-2PM & 5-6PM



## 2024-25 ADMISSIONS

Together in God's grace, may we  
give our children the roots to grow  
and the wings to fly



Find us  
here

IF YOU WISH TO VISIT THE SCHOOL OR  
WOULD LIKE TO DISCUSS ADMISSION  
ARRANGEMENTS, OR IF YOU HAVE  
ANY QUESTIONS, PLEASE CALL MRS  
START IN THE SCHOOL OFFICE ON  
01509 263430 OR EMAIL  
OFFICE@LCEPS.RISEMAT.CO.UK

LOUGHBOROUGH CHURCH OF ENGLAND PRIMARY  
SCHOOL  
WILLIAM STREET,  
LOUGHBOROUGH,  
LE11 3BY







Mrs Stillwell writes ...

Christmas is almost here!

I hope this newsletter finds you well and filled with the festive spirit. As we approach the end of this term, I wanted to take a moment to update you on some important news and events happening at Loughborough C of E.

Firstly, I would like to bid a fond farewell to Mrs Bardsley, who will be leaving us at the end of this term. We wish her all the best in her future endeavors. Please join me in sending her our warmest wishes.

In light of Mrs Bardsley's departure, I am pleased to announce that Miss Sulek will be taking over the Year 6 class. She has been working tirelessly to ensure a smooth transition for both herself and the students, and we have every confidence in her abilities. Additionally, we welcome Mr Cotton, who will be joining us to lead Year 4. We are excited to have him on board and look forward to the positive impact he will undoubtedly make.

I am also thrilled to introduce Mr Sharp, our new premises officer. He has settled in very well and has already become an invaluable member of our team. If you happen to see him around the school, please do take a moment to say hello and make him feel welcome.

Now, onto some exciting news for parents with children starting school next year. We will be hosting an Open Day on Wednesday, 13th December. This event will provide a fantastic opportunity for parents to explore our school, meet our dedicated staff, and learn more about our curriculum and ethos. Please refer to the flyer for further details and make sure to pass this information on to anyone you know who has pre-school age children.

As we approach the end of this term, I would like to take this opportunity to express my gratitude to all the staff, students and parents for their unwavering support and commitment to our school. Together, we have created a nurturing and inclusive environment where our children can grow and flourish.

Finally, I would like to wish you all a joyous and peaceful Christmas. May this festive season be filled with love, laughter, and cherished moments with your loved ones.

Warmest wishes,

Janine Stillwell

Headteacher

## Our Christian Ethos







**Collective Worship** This term in collective worship we have covered a wide range of topics, including - justice, perseverance, inclusion, friendship and of course we are now thinking about Advent and the Good News of the Christmas story. We have spotlighted a whole range of special days and themes too such as Diwali, All Saints' Day, Odd Socks Day and Anti-bullying Week, Children in Need and Black History Month. We have also welcomed our regular visitors from Emmanuel Church and All Saints' Loughborough, as well as Keith Munro from the SOAR project and Gary Farnsworth from Rainbows Children's Hospice.

Junior Worship Ambassadors from each class, now help to lead our time together and we hope that they will now become even more involved in planning and leading collective worship.

## Admissions into Reception Class September 2024

**LOUGHBOROUGH**  
C of E  
C of E  
W  
C of E PRIMARY SCHOOL

# 2024-25 ADMISSIONS

Together in God's grace, may we  
give our children the roots to grow  
and the wings to fly

**Find us  
here**

IF YOU WISH TO VISIT THE SCHOOL OR  
WOULD LIKE TO DISCUSS ADMISSION  
ARRANGEMENTS, OR IF YOU HAVE  
ANY QUESTIONS, PLEASE CALL MRS  
START IN THE SCHOOL OFFICE ON  
01509 263430 OR EMAIL  
OFFICE@LCEPS.RISEMAT.CO.UK

We are in our final push for next years new starters admissions..... we are pushing out as much as we can about next years early years admissions as the window closes 15th January 2024! Please if you know anyone still looking for a school place, do send them our way! We would love to be their first choice school.

Did you know that we don't have a catchment area? Sometimes this means that parents of pre-school children haven't heard about us! We are often told by parents visiting to look around, that they didn't know our school was here. We are working hard to get the council to put signposts up on roads that lead to the school to help us be found more easily.

Some of the local playgroups that we used to receive children from have closed this year and so even fewer people may know about our amazing school. Please help by spreading the word! If you know of anyone who has a child due to start school next September, please do encourage them to make contact with us to arrange a visit to look around and ask any questions. Visits are arranged via the school office. If you visit any toddler groups or nurseries, please can you take flyers with you to ask if they can be shared? Any support to ensure that we continue to thrive as a school with a full reception class each year will be very appreciated!

## **We are a nut-free zone!**



Just a reminder that a few of our children are allergic to nuts, so we are a nut-free zone. This means that items that you might put into packed lunches, even including things like Nutella spread on sandwiches, are not safe and must not be sent into school. If we notice any items that contain nuts or nut products, we will remove these from children's packed lunches and will send a message to explain and ask you to find an alternative for future packed lunches. Thank you for keeping all our children safe by following our nut-free school policy.

**Please also note that no sweets should be included in packed lunches, and snack bars should be also checked for nuts.**



## RISE Christmas Card Competition



From Mark Cole RISE Multi-Academy Trust CEO

Thank you to all those pupils that entered their designs for our Trust Christmas card. We received some really beautiful designs and it was tough to pick just one as a winner. Therefore, we are delighted to announce that Emike Irene in year 2 from Loughborough School was chosen as our winner.

Well done Emike!

## RISE Santa Fun Run

We want to say a HUGE thank you to all of the donations received for the Santa Fun Run the children took part in last Friday 1st December in aid of Rainbows Hospice.

We are overjoyed to announce that we raised 135% of our school Target with a final total of £541.00!!!

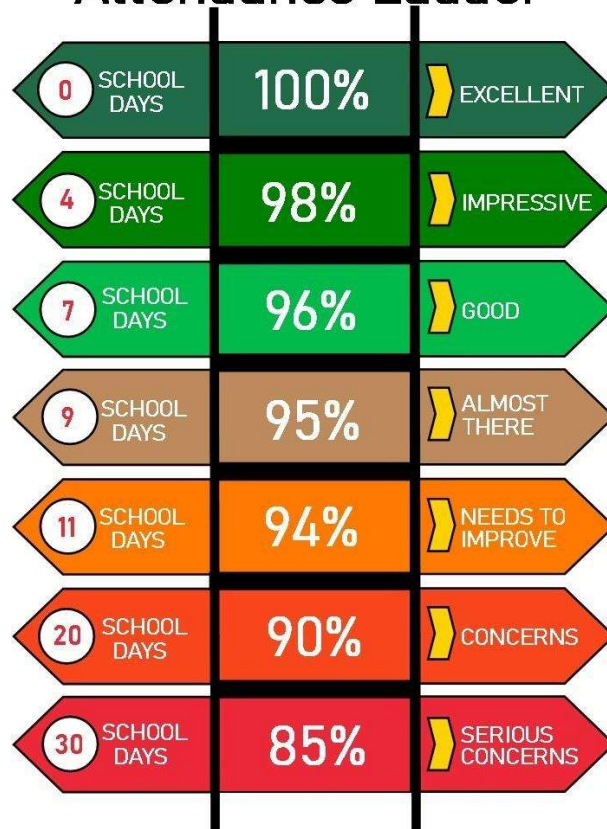


Attendance





## Attendance Ladder



*1 - Attendance over the year adds up.*

### Year to date attendance

Whole school Statutory Attendance to date 94.90%. Our target is 97%.

Yr 1: 93.26%

Yr 2: 94.70%

Yr 3: 95.09%

Yr 4: 94.55%

Yr 5: 94.81%

Yr 6: 96.92%

### Holidays or absence during term time

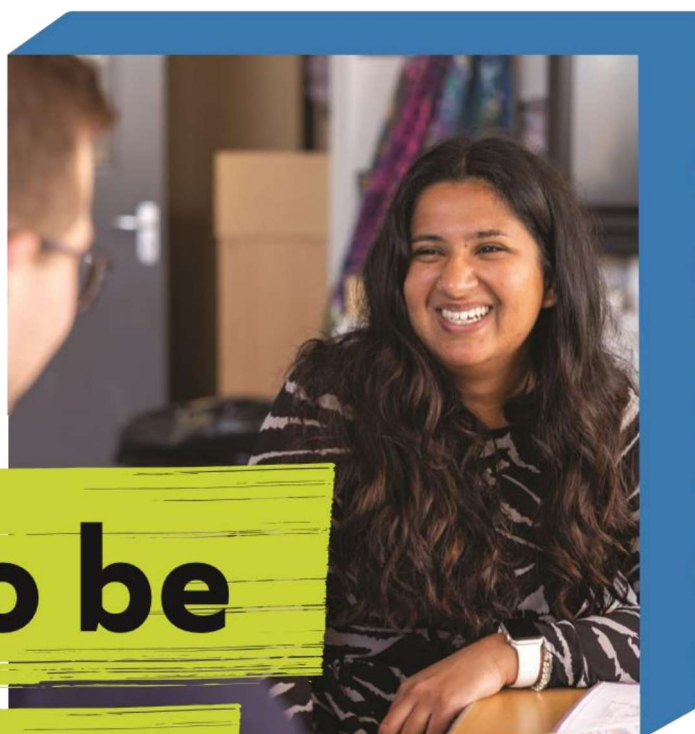
Parents do not have an automatic right to withdraw pupils from school for a holiday and in law, have to apply for permission in advance. At Loughborough C of E Primary, holidays will only be granted in exceptional circumstances. Such circumstances could include:

- a short absence (maximum of 2 days) to attend a close relative's wedding
- a religious/cultural festival, may constitute an exceptional circumstance (maximum of 2 days)
- if a parent, due to the nature of their work, cannot possibly take time off during the regular school holidays, then this might constitute an exceptional circumstance. However, this will

need to be evidenced by a letter from the employer (this letter must be on that company's official headed notepaper). A request of this nature will not be considered without a letter from employer, and repeat requests of this kind will not be granted.

**Should you wish to make a term time request to take your child out of school for any reason**, you must complete an 'Absence Application Form' available from the School Office. The request must be submitted **at least two weeks** before your intended first date of absence. Your request will be considered and you will be informed of the decision in writing.

Taking a child on holiday without permission is regarded as an unauthorised absence and each parent will be issued with a £60 fine - see Leicestershire Local Authority 'Pay a School Fine' here<sup>1</sup> Penalty Notices may also be issued for persistent absence and other forms of unauthorised absence.



# Train to be a teacher

**Transform your future and the lives of our pupils with our Teacher Training programme starting in September 2024.** Scan the QR code to find out more about shaping futures, including yours, today. You can also email [recruitment@risemat.co.uk](mailto:recruitment@risemat.co.uk) to discuss this further and ask any questions you may have.

---

<sup>1</sup><https://www.leicestershire.gov.uk/education-and-children/schools-colleges-and-academies/pay-a-school-fine>





## Term Dates



**Autumn Term 2023**

Tuesday 29th August to Friday 22nd December

(Half term - Monday 16th to Friday 20th October)

### **Spring Term 2024**

Monday 8th January to Friday 22nd March

(Half term - Monday 19th to Friday 23rd February)

### **Summer Term 2024**

Monday 8th April to Tuesday 9th July

(Half term - Monday 27th to Friday 31st May)

*School restarts again for children after the summer holiday on **Tuesday 27th August 2024.***

## Year 5 & 6 Dodgeball Tournament



*Our Year 5 & 6 Dodgeball Team were very successful at the recent championships, coming a very close second place! Thanks to Mr Dayman and his team for coaching and arranging this opportunity.*

*A message from Sophie Bridgeman at North Charnwood School Sport & Physical Activity Network*

*"What an amazing display of dodging, diving and throwing shown at today's dodgeball event. It was great to see such an amazing turn out."*



**The final scores were:**

1st -Orchard

**2nd - Loughborough C of E**

3rd - Hall Orchard

[Christingle Service](#)

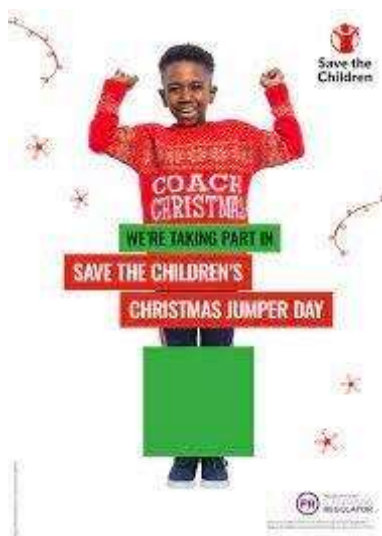




Thanks to all the volunteers at Emmanuel Church for organising and inviting us to the Walk Thru' Christingle Service again. Lots of fun was had by all and it was a great way to start our festivities!



## Christmas Dress Up/Jumper & Dinner Day Wednesday 20th December



We will be holding our Christmas Dinner Day on Wednesday 20th December. The children are also welcome to wear Christmas jumpers or any festive dress up you have available. Please do not feel pressured into heading out to buy anything new for this event!

The cost for Christmas dinner is £2.45 for KS2 children. There is no charge for EYFS/KS1 or children entitled to Free School Meals. Payment can be made via Arbor.

## Parents and Friends Association (PFA) News



Hello Everyone!

This is just a quick one to say WOW WHAT A FAYRE 🤩🤩🤩

Thank you to soooooo many of you for giving up your time and energy in pulling together a really lovely community event for our school. It was truly magical with a brilliant turn out. Thank YOU for making it happen!

Events and created fun don't just happen. And don't just happen with one person. It requires a team - and what a team we have!!!

Every laugh and every smiling face was a result of YOU and your efforts.

Thank you!!!

Kate Xxx





## Home and School Communications



Just a reminder to all parents, that you are welcome to use Class Dojo to send any non-urgent messages for class teachers to see. However, please ensure that messages are respectful and courteous at all times. Class Dojo is only viewed by staff during school hours, so please do not expect an immediate response. We will endeavour to respond before the next school day wherever possible. *Messages that need to be seen urgently* should be emailed to the school office [office@lceps.risemat.co.uk](mailto:office@lceps.risemat.co.uk)

Thank you for your understanding.

## Dates For Your Diary



*Friday mornings at 8.45am in the Car Park - **Parents Prayer Group***

*We would love to welcome more parents to join us as we gather to pray for 5 minutes for our school community. All parents/carers are welcome to join us. If you have anything specific you'd like us to pray about, do pop over and say hello.*

**Tuesday 12th Dec** - EYFS and KS1 Nativity Play - 9:30am

**Wednesday 13th Dec** - EYFS and KS1 Nativity Play - 2pm



**Tuesday 19th Dec** - KS2 Carol Service at All Saints' Church 6:30pm - all welcome!

**Wednesday 20th Dec** - Christmas Dinner Day & Christmas Jumper Day

**Thursday 21st Dec** - Christmas Parties , Further details to follow from class teachers on Dojo.



ACE COMMUNITY THEATRE PRESENTS A  
FE - FI - FO - FUN - PANTOMIME!



# JACK AND THE BEANSTALK

Written by Karl Risdale

Performed and Adapted by Ace Community Theatre

**11th - 14th January 2024**

Thurs 11th & Fri 12th & Sat 13th (7.30pm)

Sat 13th & Sun 14th (2.00pm Matinee)

**IVESHEAD SCHOOLTHEATRE**  
**FOREST ROAD, SHEPSHED (LE12 9DB)**

**ADULTS £12 / CHILDREN £8**

**BOOK ONLINE NOW AT**

**[WWW.TICKETSOURCE.CO.UK/ACE](http://WWW.TICKETSOURCE.CO.UK/ACE)**

LARGE GROUP BOOKINGS CAN BE BOOKED

AT A DISCOUNTED PRICE BY EMAILING

**[acecommunitytheatre@gmail.com](mailto:acecommunitytheatre@gmail.com)**





Thank you for reading our Newsletter!

