



Year 2 - Miss Baker's Class



Who's Who

My name is Miss Baker and I am the Year 2 Class Teacher. I am new to Loughborough Church of England Primary School this year and I have been made to feel so welcome by everybody already. Miss Wing is our Learning Support Assistant and she works with Year 2 every day supporting the children with their learning.

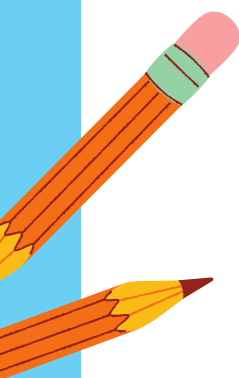
Our Half-termly Overview

In Maths this half term, we are studying addition and subtraction, and geometry. In our unit of work on addition and subtraction, we will learn a variety of skills including adding and subtracting across a 10. In geometry, we will be studying the properties of 2D and 3D shapes, drawing and sorting 2D and 3D shapes.

In English this half term, we are studying two texts by Anthony Browne, 'The Tunnel' and 'Into The Forest'. We will be focusing on predicting an ending to a story when studying 'The Tunnel' and we will be writing an informal letter based on 'Into The Forest'.

Towards the end of the half term, we will be studying Christmas poetry. In Phonics, we continue to study new sounds weekly which the children are given an opportunity to practise in our weekly spelling tests.

In PE, we are studying Gymnastics and in Music we are learning a Jazz song titled 'Sparkle in the Sun'. Our foundation subject topics this half term include Art (the life and work of Henri Rousseau); History (the Victorian era) and Geography (studying London over time).





Year 2 - Miss Baker's Class



Important Information

PE day – Monday.

Homework expectations – a COOL grid is given to the children at the start of each half term. The children are required to complete all of the tasks that are in red and at least three other activities.

These should be uploaded to your child's Class

Dojo portfolio. Children should aim to play NumBots for 20 minutes per week and to read for 15-20 minutes per day.

Class Dojo – for a weekly update about the children's learning, please see our class page.

Spelling test – the children are tested every Friday on their spellings. A list of spellings is sent home with the children the week before the test and the spellings are also uploaded to Dojo at the same time.



Useful Links

NumBots: <https://play.numbots.com/#/intro>

Interactive spelling games:

<https://www.spellingplay.co.uk/interactive-resources>

Newsround:

https://www.bbc.co.uk/newsround/news/watch_newsround

